

MONTHLY MEMBERSHIP PROGRESS REPORT

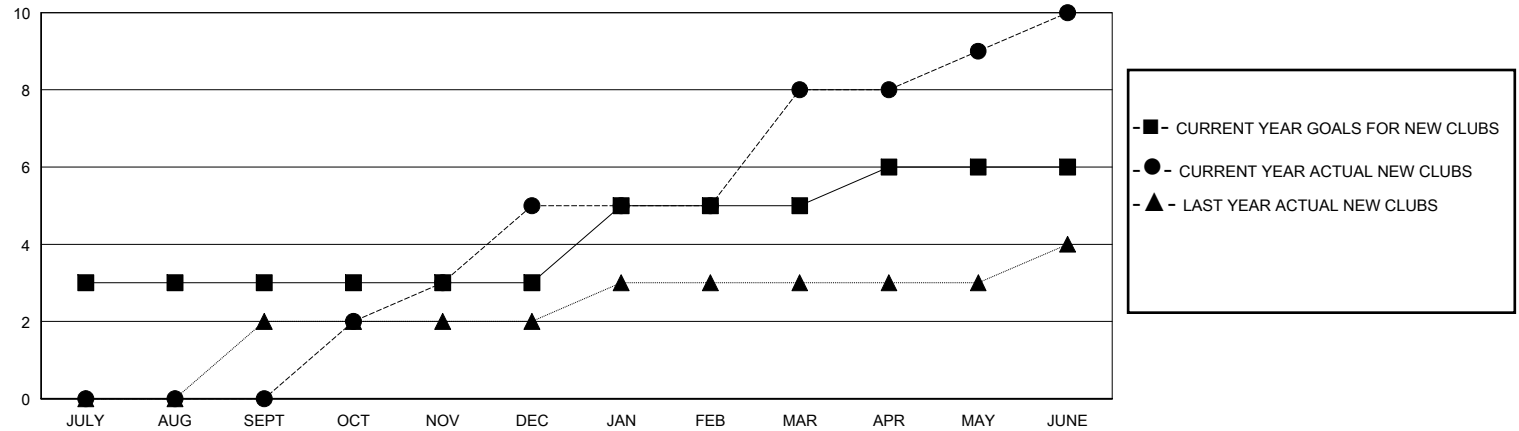
District 318 B

Results as of: 6/30/2025

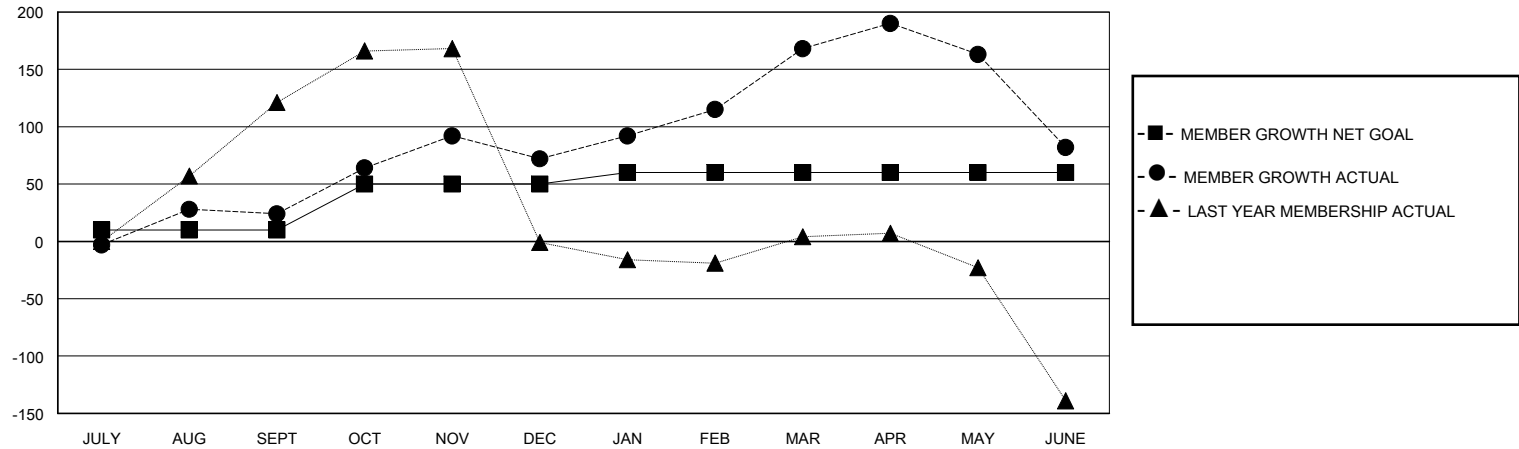
GMT: LOCATION INDIA GMT CA

| Clubs | | | | Members | | | |
|-----------------------|---------------|-----------|---------------|-----------------------|------------------------|----------------------|--|
| RESULTS FOR 2024-2025 | | | | RESULTS FOR 2024-2025 | | | |
| QUARTER | NEW CLUB GOAL | NEW CLUBS | DROPPED CLUBS | QUARTER | MEMBER GROWTH NET GOAL | MEMBER GROWTH ACTUAL | DROPPED MEMBERS ACTUAL (including transfers) |
| JULY/AUG/SEPT | 3 | 0 | 0 | JULY/AUG/SEPT | 10 | 89 | 50 |
| OCT/NOV/DEC | 0 | 5 | 3 | OCT/NOV/DEC | 40 | 223 | 150 |
| JAN/FEB/MAR | 2 | 3 | 1 | JAN/FEB/MAR | 10 | 163 | 55 |
| APR/MAY/JUNE | 1 | 2 | 5 | APR/MAY/JUNE | 0 | 141 | 219 |

GOALS AND ACTUAL NEW CLUBS CUMULATIVE



GOALS AND ACTUAL MEMBERS CUMULATIVE



| | | | | |
|------------------------|-----|---|-------------------------------------|----------------|
| DROPPED CLUBS: 9 | | 85 CLUBS OF 131 ADDED 1 OR MORE NEW MEMBERS | <u>GENDER DISTRIBUTION</u> | |
| | | | MALE | 3,200 (89.34%) |
| | | | FEMALE | 382 (10.66%) |
| <u>DROPPED MEMBERS</u> | | CLICK HERE FOR CUMULATIVE MEMBERSHIP DATA | | |
| DECEASED | 18 | | TOTAL FAMILY UNIT MEMBERS 651 | |
| CLUB CANCELLED | 119 | | | |
| OTHER | 333 | | FAMILY MEMBERS PAYING HALF DUES 337 | |
| TOTAL | 470 | | | |